

# \$399,900 - 2110 Cambridge Park Dr, Gulf Breeze

MLS® #662881

**\$399,900**

4 Bedroom, 3.00 Bathroom, 2,117 sqft

Residential on 0.13 Acres

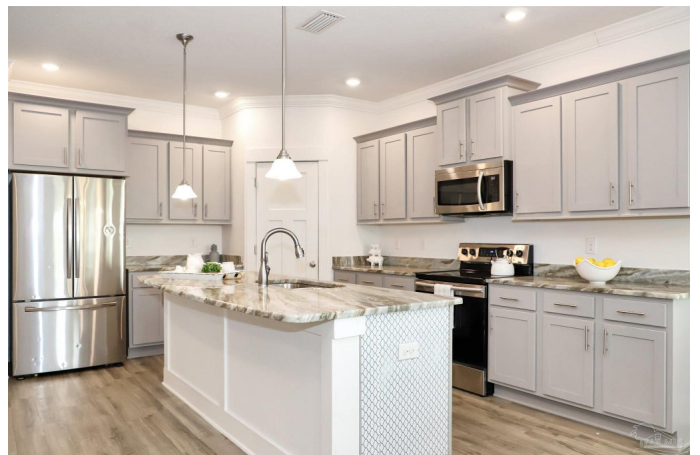
Cambridge Park, Gulf Breeze, FL

Discover this stunning all-brick, 4-bedroom, 3-bath Craftsman-style home perfectly situated between Gulf Breeze and Navarre. With a spacious and inviting split-bedroom, open floor plan, this home offers the perfect blend of comfort, style, and functionality. Step into the oversized foyer that leads into a beautifully designed living space featuring luxury vinyl flooring, crown molding, and an abundance of natural light. The gourmet kitchen is a chef's dream, boasting granite countertops, stainless steel appliances, and upgraded staggered cabinetry. The private primary suite is a serene retreat with tray ceilings and crown molding, while the spa-like en suite bath features a granite double vanity, garden tub, separate shower, large walk-in closet, and water closet. Two additional bedrooms share a full hall bath, and a fourth bedroom includes its own private en suite—ideal for guests or a home office. Step outside to the expansive covered back porch, perfect for entertaining or relaxing while enjoying peaceful views of the neighborhood pond. Don't miss this centrally located gem with character and high-end finishes throughout!

Built in 2020

## Essential Information

MLS® #	662881
Price	\$399,900



Bedrooms	4
Bathrooms	3.00
Full Baths	3
Square Footage	2,117
Acres	0.13
Year Built	2020
Type	Residential
Sub-Type	Single Family Residence
Style	Traditional
Status	Active

### **Community Information**

Address	2110 Cambridge Park Dr
Subdivision	Cambridge Park
City	Gulf Breeze
County	Santa Rosa
State	FL
Zip Code	32563

### **Amenities**

Parking Spaces	2
Parking	2 Car Garage, Garage Door Opener
# of Garages	2
Has Pool	Yes
Pool	None

### **Interior**

Interior Features	Baseboards, Ceiling Fan(s), High Ceilings, Recessed Lighting
Appliances	Electric Water Heater, Built In Microwave, Dishwasher
Heating	Central
Cooling	Central Air, Ceiling Fan(s)
# of Stories	1
Stories	One

### **Exterior**

Windows	Double Pane Windows, Blinds
Roof	Shingle
Foundation	Slab

### **School Information**

Elementary	West Navarre
Middle	WOODLAWN BEACH
High	Navarre

**Additional Information**

Zoning	Res Single
HOA Fees	250
HOA Fees Freq.	Annually

**Listing Details**

Listing Office	KELLER WILLIAMS REALTY GULF COAST
----------------	-----------------------------------

Copyright© 2025 by the Multiple Listing Service of the Pensacola Association of REALTORS®. This information is believed to be accurate but is not guaranteed. Subject to verification by all parties. This data is copyrighted and may not be transmitted, retransmitted, copied, framed, repurposed, or altered in any way for any other site, individual and/or purpose without the express written permission of the Multiple Listing Service of the Pensacola Association of REALTORS®. Florida recognizes single and transaction agency relationships. Information Deemed Reliable But Not Guaranteed. Any use of search facilities of data on this site, other than by a consumer looking to purchase real estate, is prohibited.