

# \$1,800 - 6068 Secretariat Way, Pensacola

MLS® #668584

**\$1,800**

3 Bedroom, 2.00 Bathroom, 1,272 sqft

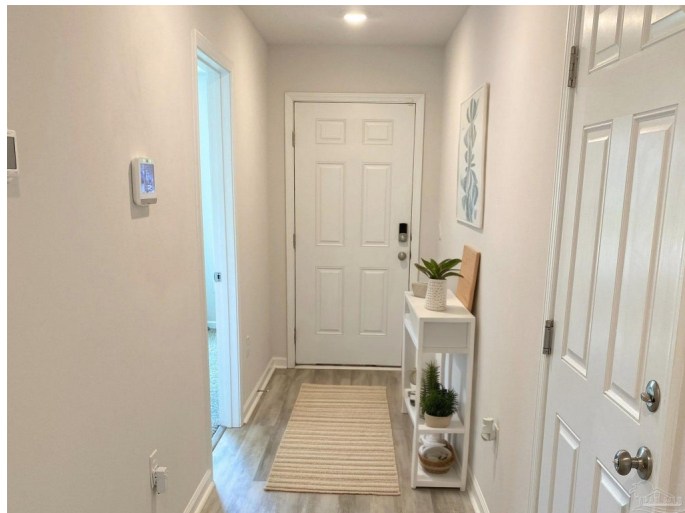
Residential Lease on 0.17 Acres

Bridlewood, Pensacola, FL

Welcome to this cheerful 3-bedroom, 2-bath home tucked away in a sidewalk-lined neighborhood where friendly neighbors wave hello and the park is just a short stroll down the street! With easy access to the interstate, you're minutes from everything Pensacola has to offer—beaches, bases, dining, and more. Inside, the layout is both smart and inviting. The first bedroom is just off the foyer, complete with a spacious walk-in closet and its own bath with double sink vanity—perfect for guests or a quiet office setup. The heart of the home is the open-concept kitchen, dining, and living space at the back, ideal for hosting game nights or simply relaxing. You'll love the stainless steel appliances, sleek LVP flooring, and the cozy carpeted bedrooms for that soft underfoot feel. Bedrooms 2 and 3 are nestled near the second full bath, creating a peaceful little wing of their own. And just wait until you step outside—your large private backyard backs up to serene woods, giving you the perfect backdrop for morning coffee, weekend grilling, or quiet evenings under the stars. Some photos may be virtually staged. Pets by owner approval. \$75 App fee per adult, half off for military. Subject to credit check, background check, employment verification, and rental verification. CERTIFIED Funds required for move in!

Built in 2023

## Essential Information



MLS® #	668584
Price	\$1,800
Bedrooms	3
Bathrooms	2.00
Full Baths	2
Square Footage	1,272
Acres	0.17
Year Built	2023
Type	Residential Lease
Sub-Type	Residential Detached
Status	Active

### Community Information

Address	6068 Secretariat Way
Subdivision	Bridlewood
City	Pensacola
County	Escambia - FL
State	FL
Zip Code	32526

### Amenities

Utilities	Cable Available
Parking Spaces	4
Parking	2 Car Garage, Garage Door Opener
# of Garages	2
Waterfront	No Water Features
Has Pool	Yes
Pool	None

### Interior

Interior Features	High Speed Internet
Appliances	Electric Water Heater, Built In Microwave, Dishwasher, Disposal, Oven/Cooktop, Refrigerator
Heating	Central
Cooling	Ceiling Fan(s), Central Air
# of Stories	1
Stories	One

### Exterior

Lot Description	Interior Lot
Windows	Double Pane Windows
Foundation	Slab

**School Information**

Elementary	Beulah
Middle	BEULAH
High	Pine Forest

**Listing Details**

Listing Office	Navy To Navy Homes
----------------	--------------------

Copyright© 2025 by the Multiple Listing Service of the Pensacola Association of REALTORS®. This information is believed to be accurate but is not guaranteed. Subject to verification by all parties. This data is copyrighted and may not be transmitted, retransmitted, copied, framed, repurposed, or altered in any way for any other site, individual and/or purpose without the express written permission of the Multiple Listing Service of the Pensacola Association of REALTORS®. Florida recognizes single and transaction agency relationships. Information Deemed Reliable But Not Guaranteed. Any use of search facilities of data on this site, other than by a consumer looking to purchase real estate, is prohibited.