

\$950,000 - 902 E Blount St, Pensacola

MLS® #668632

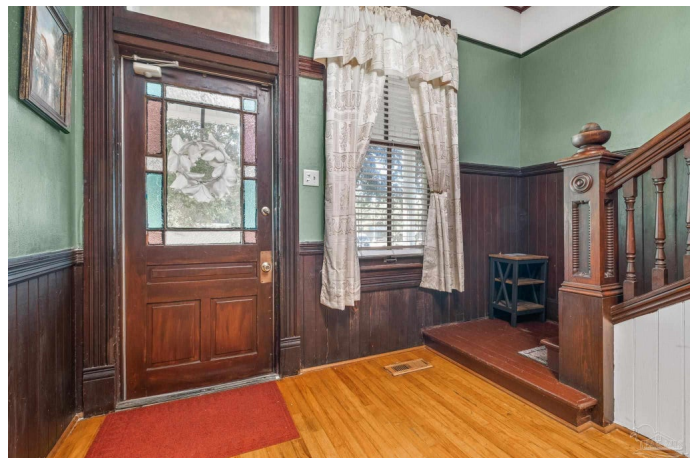
\$950,000

13 Bedroom, 4.00 Bathroom, 5,238 sqft

Residential on 0.36 Acres

New City Tract, Pensacola, FL

This hard to find two-story 1900 Victorian marvel boasts an impressive 13 bedrooms and 5 bathrooms(3 full 2 half), setting the stage for potentially grand living and endless possibilities. 2 Marbled double mantle fireplaces, one was a coal burning, 5 original stained glass windows, 10 ft ceilings. Home is built with red wood studs, thick solid wood chair railing. Potentially a bed & breakfast, or an esteemed law office, this residence. Elegant Craftsmanship. Step inside, and be welcomed by the majestic embrace of original oak and heart pine floors that infuse each corner with warmth and character. The spacious layout is complemented by an expansive butler's pantry, seamlessly fusing practicality with old-world sophistication. Embrace the Southern lifestyle on the inviting front porch, where gentle breezes beckon you to unwind while facing the South, sets the scene for sipping sweet tea enjoying Southern breezes. A side courtyard adorned with fruit trees, creating a serene oasis that perfectly complements the Victorian masterpiece. Convenience and Access. Ample Private off-street parking, adding to its practicality and desirability. With a history of serving as both distinguished office space and a successful Airbnb, this home embodies adaptability and prestige. A Neighborhood Steeped in History. Conveniently situated near Historic Downtown Pensacola and the picturesque Pensacola Bay, this potentially enchanting residence offers proximity to charming shops, gourmet



dining, and cultural landmarks, enhancing your quality of life and embracing the essence of the area's rich heritage. Come and explore the blend of history, sophistication, and limitless potential that await within this iconic Victorian house. Some History on the Kirtz Building Build was completed 1860, major additions 1900 and 1973. upgrades: from 2004 through 2007. include 4 HVAC units 2024, added insulation, 22 windows, wiring 400 amp service and plumbing updates, some foam insulation, ,2021 roof.

Built in 1900

Essential Information

MLS® #	668632
Price	\$950,000
Bedrooms	13
Bathrooms	4.00
Full Baths	3
Square Footage	5,238
Acres	0.36
Year Built	1900
Type	Residential
Sub-Type	Single Family Residence
Style	Victorian
Status	Active

Community Information

Address	902 E Blount St
Subdivision	New City Tract
City	Pensacola
County	Escambia - FL
State	FL
Zip Code	32503

Amenities

Utilities	Cable Available
Parking Spaces	8

Parking	Guest, Parking Lot
Has Pool	Yes
Pool	None

Interior

Interior Features	Baseboards, Bookcases, Ceiling Fan(s), Chair Rail, Crown Molding, High Ceilings, High Speed Internet, Bonus Room, Office/Study
Appliances	Electric Water Heater, Dishwasher, Microwave, Refrigerator
Heating	Multi Units
Cooling	Multi Units, Ceiling Fan(s)
Fireplace	Yes
Fireplaces	Two or More
# of Stories	2
Stories	Two

Exterior

Lot Description	Corner Lot
Windows	Blinds, Drapes, Drapery Rods
Roof	Shingle
Foundation	Off Grade

School Information

Elementary	Oj Semmes
Middle	WOODHAM
High	Pensacola

Additional Information

Zoning	City,Commercial,Res Single
HOA Fees Freq.	Annually

Listing Details

Listing Office	Engel & Volkers Pensacola
----------------	---------------------------

Copyright© 2025 by the Multiple Listing Service of the Pensacola Association of REALTORS®. This information is believed to be accurate but is not guaranteed. Subject to verification by all parties. This data is copyrighted and may not be transmitted, retransmitted, copied, framed, repurposed, or altered in any way for any other site, individual and/or purpose without the express written permission of the Multiple Listing Service of the Pensacola Association of REALTORS®. Florida recognizes single and transaction agency relationships. Information Deemed Reliable But Not Guaranteed. Any use of search facilities of data on this site, other than by a consumer looking to purchase real estate, is prohibited.