

# \$685,000 - 1017 N Palafox, Pensacola

MLS® #668691

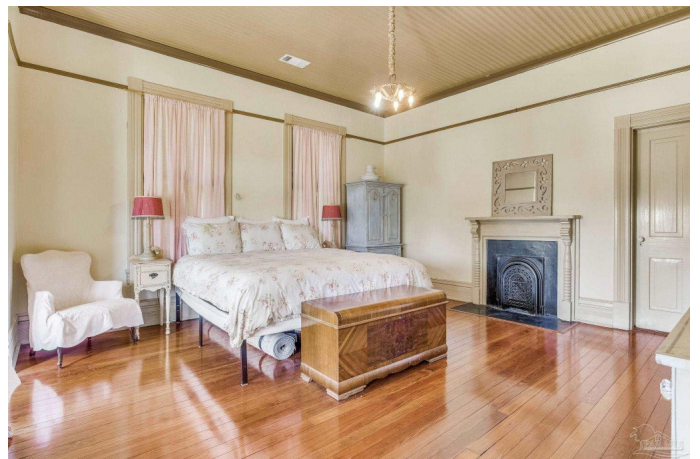
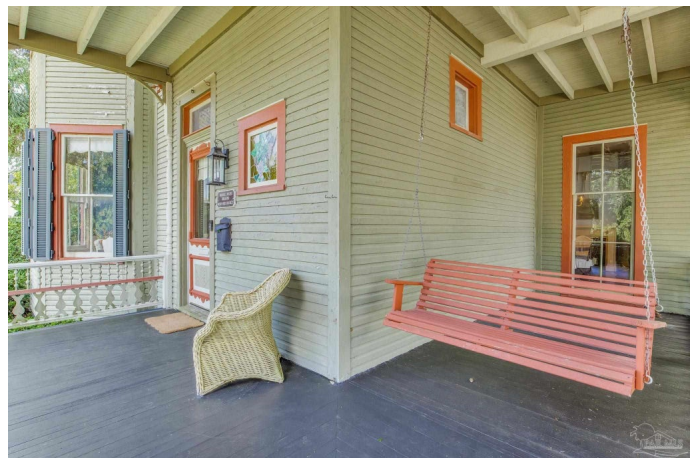
**\$685,000**

4 Bedroom, 3.00 Bathroom, 3,456 sqft

Residential on 0.28 Acres

Belmont Tract, Pensacola, FL

HAVE YOU EVER DREAMED OF LIVING IN A HISTORIC HOME IN THE PRESTIGIOUS NORTH HILL? THE WAIT IS OVER! WELCOME TO 1017 N PALAFOX STREET, A TIMELESS BEAUTY ON A CORNER LOT IN ONE OF PENSACOLA'S MOST CHERISHED NEIGHBORHOODS. SITUATED ALONG A QUIANT ROAD ONCE TRAVELED BY HORSE AND BUGGY, THIS HOME WELCOMES YOU WITH A COVERED FRONT PORCH, PERFECT FOR SIPPING YOUR MORNING COFFEE OR ENJOYING A RELAXING SWING. STEP INSIDE AND BE SWEEPED AWAY BY SOARING 11-FOOT CEILINGS, GLEAMING ORIGINAL HARDWOOD FLOORS, AND SIX (SEALED) FIREPLACES, EACH ADDING CHARACTER TO THE LIVING PARLORS, DINING ROOM, AND BEDROOMS. ONE FIREPLACE EVEN FEATURES A TILED SURROUND WITH DOGS, A TOUCHING NOD TO A FORMER OWNER WHO LOVINGLY RAISED HUNTING DOGS HERE. GRAPE VINE ACCENTS ON SELECT DOORWAYS CELEBRATE ANOTHER CHAPTER OF THE HOME'S STORY, WHEN A BACKYARD VINEYARD ONCE FLOURISHED. THE KITCHEN IS TUCKED QUIETLY AT THE BACK OF THE HOME, OFFERING THE IDEAL SPACE TO ENTERTAIN WHILE KEEPING THE MESS OUT OF SIGHT AND OUT OF MIND. IT BOASTS CUSTOM WHITE CABINETRY, GRANITE COUNTERTOPS, STAINLESS STEEL APPLIANCES, A GAS STOVE, AND A



FARMHOUSE SINK OVERLOOKING THE PRIVATE BACKYARD. UPSTAIRS, THE PRIMARY SUITE IS SPACIOUS, COMPLETE WITH A COZY FIREPLACE, HARDWOOD FLOORS, AND ROOM FOR A KING-SIZED BED. THE ENSUITE BATHROOM OFFERS DOUBLE PEDESTAL SINKS, A LARGE TILED WALK-IN SHOWER, AND SPACE FOR YOUR MORNING ROUTINE. ANOTHER FULL UPSTAIRS BATH FEATURES A TUB/SHOWER COMBO AND SINGLE PEDESTAL SINK, PERFECTLY POSITIONED TO SERVE THE ADDITIONAL UPSTAIRS BEDROOMS. EACH OF THE BEDROOMS INCLUDES A FIREPLACE AND CLOSET, WHILE THE FOURTH BEDROOM (WITHOUT A CLOSET) PROVIDES A VERSATILE SPACE FOR A GUEST ROOM OR OFFICE. THE SUNROOM, ONCE THE ORIGINAL KITCHEN, IS NOW THE PERFECT SPOT FOR BREAKFAST OR QUIET MOMENTS WITH A BOOK. DOWNSTAIRS, A THIRD FULL BATH FEATURES CHARMING CUSTOM WALLPAPER AND A TUB/SHOWER COMBO. A LAUNDRY ROOM ON THE SECOND FLOOR OFFERS CONVENIENCE AND BONUS STORAGE SPACE. EXPERIENCE IT FOR YOURSELF!

Built in 1900

**Essential Information**

MLS® #	668691
Price	\$685,000
Bedrooms	4
Bathrooms	3.00
Full Baths	3
Square Footage	3,456
Acres	0.28
Year Built	1900
Type	Residential

Sub-Type	Single Family Residence
Style	Traditional, Victorian
Status	Active

### Community Information

Address	1017 N Palafox
Subdivision	Belmont Tract
City	Pensacola
County	Escambia - FL
State	FL
Zip Code	32501

### Amenities

Parking Spaces	2
Parking	2 Car Garage, Detached, Front Entrance
# of Garages	2
Has Pool	Yes
Pool	None

### Interior

Interior Features	Ceiling Fan(s), Sun Room
Appliances	Water Heater, Electric Water Heater, Built In Microwave, Microwave, Refrigerator
Heating	Natural Gas
Cooling	Central Air, Ceiling Fan(s)
Fireplace	Yes
Fireplaces	Two or More
# of Stories	2
Stories	Two

### Exterior

Lot Description	Central Access, Corner Lot, Historic District
Windows	Some Blinds, Some Drapes
Roof	Shingle
Foundation	Off Grade

### School Information

Elementary	Global Learning Academy
Middle	WORKMAN

High                      Pensacola

**Additional Information**

Zoning                      Historical,Res Single

HOA Fees Freq.      Annually

**Listing Details**

Listing Office              Levin Rinke Realty

Copyright© 2025 by the Multiple Listing Service of the Pensacola Association of REALTORS®. This information is believed to be accurate but is not guaranteed. Subject to verification by all parties. This data is copyrighted and may not be transmitted, retransmitted, copied, framed, repurposed, or altered in any way for any other site, individual and/or purpose without the express written permission of the Multiple Listing Service of the Pensacola Association of REALTORS®. Florida recognizes single and transaction agency relationships. Information Deemed Reliable But Not Guaranteed. Any use of search facilities of data on this site, other than by a consumer looking to purchase real estate, is prohibited.