

\$1,975 - 5911 Laurel Oak Dr, Pensacola

MLS® #670316

\$1,975

4 Bedroom, 2.00 Bathroom, 1,787 sqft
Residential Lease on 0.16 Acres

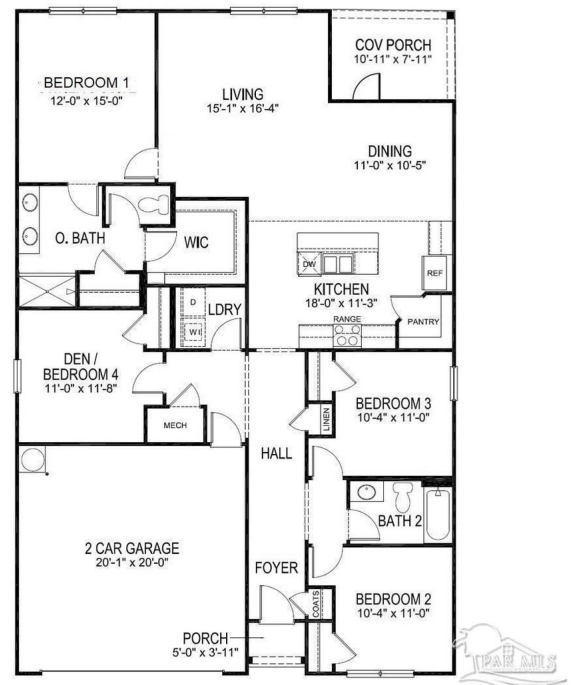
Glenhollow, Pensacola, FL

MOVE IN SPECIAL 1/2 OFF 1st full month of rent if a lease is signed by 10/31 ~ Newer Construction Home in desirable neighborhood in Beulah! ~ This beautiful home boasts Wood Looking Luxury Vinyl floors throughout main living spaces with carpet in bedrooms ~ Living Room has large walk-in closet, second closet and recessed lighting along with en suite bathroom featuring Double Vanities and Walk-In Shower ~ Kitchen is Fully Equipped with Stainless Steel Appliances and HUGE Island ~ Dining Room / Kitchen with Breakfast Bar ~ Split Floor Plan ~ 3 guest bedrooms with Guest Bathroom conveniently located between them ~ Large 2 car garage and Covered Back Porch ~ Solar Panels on home â€“ tenant to pay a \$195 utility fee each month to cover electric ~ Desirable location, great schools; about 20 min to NAS Pensacola, 10 minutes to I-10 and Navy Federal Campus **** Please verify all features and dimensions prior to applying or placing a deposit on the home if there are specific items that are important to you *** All of our homes are in very good condition and clean â€“ please give us an opportunity to show you excellent customer service!

Built in 2022

Essential Information

MLS® #	670316
Price	\$1,975



Bedrooms	4
Bathrooms	2.00
Full Baths	2
Square Footage	1,787
Acres	0.16
Year Built	2022
Type	Residential Lease
Sub-Type	Residential Detached
Status	Active

Community Information

Address	5911 Laurel Oak Dr
Subdivision	Glenhollow
City	Pensacola
County	Escambia - Fl
State	FL
Zip Code	32526

Amenities

Utilities	Underground Utilities
Parking Spaces	2
Parking	2 Car Garage, Garage Door Opener
# of Garages	2

Interior

Interior Features	Baseboards, Ceiling Fan(s), High Ceilings, Recessed Lighting
Appliances	Electric Water Heater, Dryer, Washer, Built In Microwave, Dishwasher, Disposal, Electric Cooktop, Refrigerator
Heating	Central
Cooling	Ceiling Fan(s), Central Air
Stories	One

Exterior

Lot Description	Interior Lot
Windows	Double Pane Windows, Blinds
Foundation	Slab

School Information

Elementary	Beulah
------------	--------

Middle	BEULAH
High	Pine Forest

Listing Details

Listing Office	MARK DOWNEY & ASSOCIATES, INC.
----------------	--------------------------------

Copyright© 2025 by the Multiple Listing Service of the Pensacola Association of REALTORS®. This information is believed to be accurate but is not guaranteed. Subject to verification by all parties. This data is copyrighted and may not be transmitted, retransmitted, copied, framed, repurposed, or altered in any way for any other site, individual and/or purpose without the express written permission of the Multiple Listing Service of the Pensacola Association of REALTORS®. Florida recognizes single and transaction agency relationships. Information Deemed Reliable But Not Guaranteed. Any use of search facilities of data on this site, other than by a consumer looking to purchase real estate, is prohibited.