

# \$536,000 - 1443 Central Pkwy, Gulf Breeze

MLS® #671683

**\$536,000**

4 Bedroom, 2.50 Bathroom, 2,240 sqft

Residential on 0.27 Acres

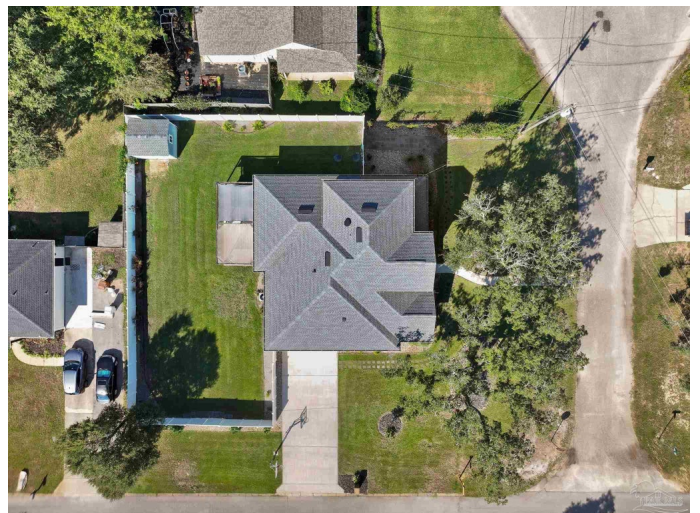
Santa Rosa Shores East, Gulf Breeze, FL

Built in 2022, this gently lived in 2240 sq. ft. custom built modern farmhouse offers the perfect blend of craftsmanship and comfort. Inside, youâ€™ll find 4 bedrooms and 2.5 baths, including a first-floor master retreat with a tiled walk-in shower, soaking tub, dual vanities, and a custom closet. The open layout features 9 ft ceilings downstairs, a vaulted kitchen with truss beams, quartz countertops, gray-and-white cabinetry, and a large island, flowing into a cozy living room with ceiling beams and a shiplap fireplace. Situated on a beautifully landscaped corner lot, the property includes a new white vinyl fence, oversized garage with 8-ft door, spacious outbuilding, Hardie board siding, hurricane shutters, and a covered back patio for entertaining. Added Benefit for Veterans, this home comes with an assumable VA mortgage at a low interest rateâ€”a rare find in todayâ€™s market. Move-in ready with timeless details and modern convenience throughout.

Built in 2022

## Essential Information

MLS® #	671683
Price	\$536,000
Bedrooms	4
Bathrooms	2.50
Full Baths	2
Square Footage	2,240



Acres	0.27
Year Built	2022
Type	Residential
Sub-Type	Single Family Residence
Style	Country
Status	Active

### **Community Information**

Address	1443 Central Pkwy
Subdivision	Santa Rosa Shores East
City	Gulf Breeze
County	Santa Rosa
State	FL
Zip Code	32563

### **Amenities**

Parking Spaces	2
Parking	2 Car Garage, Garage Door Opener
# of Garages	2
Has Pool	Yes
Pool	None

### **Interior**

Interior Features	Baseboards, Bookcases, Cathedral Ceiling(s), Ceiling Fan(s), High Ceilings, Recessed Lighting, Vaulted Ceiling(s)
Appliances	Electric Water Heater, Built In Microwave, Microwave, Refrigerator, Self Cleaning Oven
Heating	Central
Cooling	Central Air, Ceiling Fan(s)
Fireplace	Yes
Fireplaces	Electric
# of Stories	2
Stories	Two

### **Exterior**

Exterior Features	Irrigation Well, Lawn Pump, Sprinkler, Rain Gutters
Lot Description	Corner Lot, Cul-De-Sac
Windows	Double Pane Windows, Drapes, Drapery Rods, Shutters
Roof	Shingle

Foundation                      Slab

**School Information**

Elementary                      Oriole Beach  
Middle                              GULF BREEZE  
High                                Gulf Breeze

**Additional Information**

Zoning                            Res Single  
HOA Fees Freq.                Annually

**Listing Details**

Listing Office                    Levin Rinke Realty

Copyright© 2025 by the Multiple Listing Service of the Pensacola Association of REALTORS®. This information is believed to be accurate but is not guaranteed. Subject to verification by all parties. This data is copyrighted and may not be transmitted, retransmitted, copied, framed, repurposed, or altered in any way for any other site, individual and/or purpose without the express written permission of the Multiple Listing Service of the Pensacola Association of REALTORS®. Florida recognizes single and transaction agency relationships. Information Deemed Reliable But Not Guaranteed. Any use of search facilities of data on this site, other than by a consumer looking to purchase real estate, is prohibited.